

ColorFast Demo – Installation and Usage

Installation

Download and run the demo file. The demo is for use with Windows NT4, 2000 or XP. The machine **must** have a video resolution of 800x600 pixels or greater. It is best to have 16-bit or higher color depth, but this is not required.

The installation program has several screens. Click on the “Next” button on each screen till you get to the last screen. Then click on the “Finish” button.

We suggest that you restart your PC after installation.

Starting ColorFast

Click on the Windows “*Start*” button, then click on the “ColorFast” button, and then finally on the next “ColorFast” button. You will be asked to login – use the User Name “demo” and the password “demo”. You can enter this in UPPER or lower case, or a Combination, it doesn’t matter.

Dispensing

To dispense, first click on the “Dispense” button (top left of the screen). You will see the following screen:

The screenshot shows a software interface for dispensing. It features several input fields and buttons:

- Order Number:** A text input field followed by a button labeled "... (F4)".
- Tub:** A small text input field.
- Recipe Code:** A text input field followed by a button labeled "... (F5)".
- Recipe Name:** A text input field.
- Quantity:** A numeric input field containing "0" with up and down arrow icons, followed by the unit "kg".
- Units:** Below the quantity field, there are two more input fields: the first is followed by the text "tubs of" and the second is followed by "kg".
- Dispense:** A large button at the bottom center of the interface.

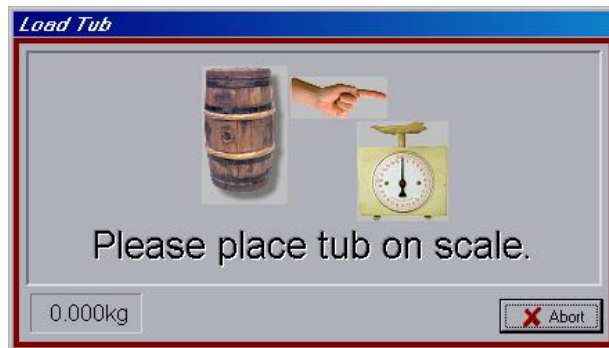
Order Number – leave empty for now. Just press ENTER.

Recipe Code – type in “demo1” and press ENTER.

Quantity – just press ENTER to accept the default weight.

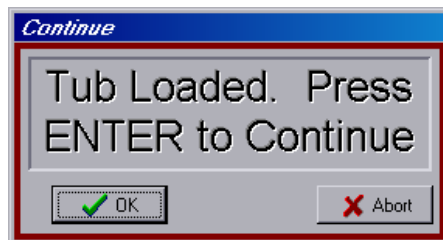
Then press ENTER one more time to start the dispense.

At the start of the dispense you will be asked to load a tub:



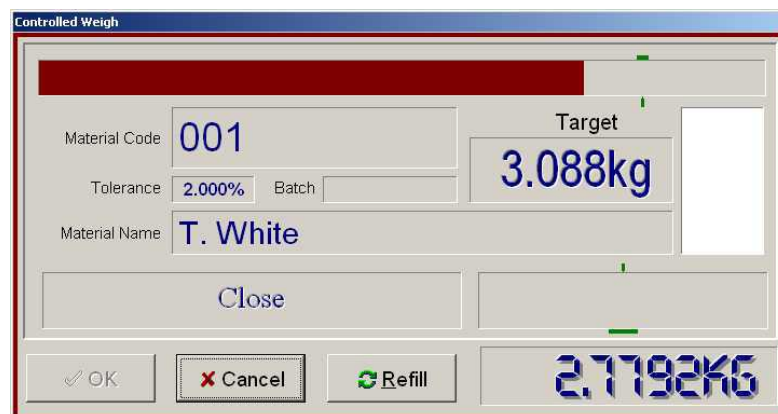
Hold down the ALT key and press the F8 key to load the tub.

You will then be asked for confirmation to continue:



Click on OK or press ENTER to continue.

The system will ask you to dispense each material in turn. To add material to the scale, hold down ALT and press F8 (just the same as loading the tub before). Each press of F8 adds 1/10th of the target weight, so press it 10 times to dispense the correct amount. You can experiment with dispensing too much if you wish.



At the end of the dispense, you will be asked to unload the tub:



Hold down the ALT key and press the F9 key to unload the tub.

To close the program, click on the Logoff button or press ALT + F4. At the login screen click on the Quit button.